



W2: Huebner Creek – Eckhert to Bandera
Solicitation Number: CO-00420
Job No.: 15-4513

ADDENDUM 1
April 14, 2021

To Respondent of Record:

This addendum, applicable to work referenced above, is an amendment to the price proposal, plans and specifications and as such will be a part of and included in the Contract Documents. Acknowledge receipt of this addendum by entering the Addendum number and issue date on the space provided in submitted copies of the price proposal.

RESPONSES TO QUESTIONS

Q1: Soil Borings not available for download. Do you know when those will be available?

Response: *The Geotechnical Data Report can be requested in accordance with SC 1.3 and was made available on April 1, 2021.*

Q2: Plans indicate Fiberglass or Polymer Manholes. In the bid items the descriptions do not state “or”. Please clarify that use of FRP or Polymer for 6’ Diameter Manholes is up to contractor.

Response: *The Price Proposal and Overall Quantities sheet (G5) have been updated to include “or” in the description, matching the callouts on the plan and profile sheets. Either material type is acceptable for the contractor to use and the contractor shall bid based on their selected material choice for manholes. Refer to “Changes to Specifications” item No. 2 and “Changes to Plans” item No. 1 within this Addendum.*

Q3: There are no details for a polymer concrete manhole installation. Are polymer concrete manholes to adhere to standard precast details or will another detail be provided?

Response: *SP850 Polymer Concrete Sanitary Sewer Structures are to be constructed per the language listed in SP850. Installation of the SP850 Polymer Concrete Sanitary Sewer Structure is to adhere to the standard precast details in SAWS Special Provision 852. Language was added to SP850.5.23 of the special provision. Refer to “Changes to Specifications” item No. 4 within this Addendum.*

Q4: Bid item 37 is for a polymer concrete sanitary sewer structure, quantity of 1 ea. Please provide clarification on where this structure is located.

Response: *The Price Proposal Item 37 is located on sheet C29A and is for MH D-1. A revised sheet is included with this Addendum No. 1 to clarify this location and update the language used with the callout for MH D-1. The Price Proposal Item No. 37 SP850 Polymer Concrete Sanitary Sewer Structure has been removed and this manhole was revised to allow SP852A Sanitary Sewer Drop Manhole or SP853A Fiber-Reinforced Sanitary Sewer Manhole. Refer to “Changes to Specifications” item No. 2 and “Changes to Plans” item No. 2 within this Addendum.*

Q5: Tunnel liner plate sizing differs from casing per tables on C38. Can the bid items that allow either material be modified to state the size of each material as details and bid items currently contradict each other.

Response: *The Price Proposal items and Overall Quantities sheet (G5) have been updated to state both the steel casing diameter and liner plate diameter as identified in the tables on sheet C38. Refer to “Changes to Specifications” item No. 2 and “Changes to Plans” item No. 1 within this Addendum.*

Q6: SS 02610-Steel Casing Pipe, Part 1.05.D requires a minimum casing thickness of “0.850 inches”. The Pay Items that include “Steel Casing or Liner” (PI 53-PI 56) call out thicknesses between 0.375 inches and 0.50 inches thick for casing, not 0.850 inches. Please clarify which document controls in this case, SS 02610 or the Price Proposal.

Response: *Specification SS 02610 has been revised to address this question. Refer to “Changes to Specifications” item No. 3 within this Addendum.*

Q7: Is there a Geotechnical Baseline Report for the tunneled portions?

Response: *A Geotechnical Data Report was prepared for the sewer alignment. This report can be requested from SAWS in accordance with SC 1.3. A Geotechnical Baseline Report is not available for this project.*

Q8: Could you elaborate on the 15,135 LF of existing sewer main CCTV?

Response: *The linear footage was calculated based on the existing sanitary sewer system (diameters ranging from 8-inch to 24-inch) shown on sheets G21 and G22. This line item is used to video the project limits prior to construction starting to locate connections and log existing conditions. The word “pre” has been added to the Price Proposal and Overall Quantities sheet (G5) description for clarity. Refer to “Changes to Specifications” item No. 2 and “Changes to Plans” item No. 1 within this Addendum.*

Q9: What size pipe is CSC pipe that might need to be welded?

Response: *The existing CSC Recycle Water Main pipe located throughout the project limits is 36-inches in diameter. The diameter of the pipe is labeled throughout the plan set for reference.*

CHANGES TO SPECIFICATIONS

1. Revision to Supplementary Instruction to Respondents (SIR):
 - SIR-12 Section F.2 refers to a Required Documents Matrix. This Matrix has been added as SIR-14.
2. Revision to the Price Proposal form:
 - Remove Price Proposal form and replace it in its entirety with the attached Price Proposal form in Addendum No. 1. Respondents shall use this version of the Price Proposal when submitting for this RFCSP. Failure to do so could result in the Respondent’s proposal being found non-responsive.
 - Remove:
 - i. Line Item 37 SP 850 Polymer Concrete Sanitary Sewer Structure; 1 EA
 - Insert:
 - i. Line Items 31, 33, 35 to include the diameter of the SP 850 Polymer Concrete Sanitary Sewer Structure of 6-ft and the word “or” between the Fiberglass Manhole and Polymer Concrete Sanitary Sewer Structure.
 - ii. Line Items 52, 53, 54, and 55 have been updated to reflect the language as identified in the tables for Steel Casing and Liner Plate on sheet C38 of the plan set.
 - iii. Line Item 64 has been updated to include the word “pre” in the description to clarify the videoing to occur ahead of construction activities.
 - Original Line Item 37 SP 850 Polymer Concrete Sanitary Sewer Structure quantity of 1 EA has been moved to line items 27 (SP852A/SP853A Drop), 29 (SP852A/SP853A Drop Extra Depth), and 30 (SP852B/SP853B Testing).

3. Revise Special Specification 02610:
 - Remove:
 - i. 1.05. Design Criteria
 1. 1.05.D – Steel casing pipe shall have a minimum wall thickness of 0.850 inches.
 - Insert:
 - i. 1.05 Design Criteria
 1. 1.05.D – Refer to the plan set for the applicable details pertaining to the minimum wall thickness for steel casing.
4. Revise Special Provision 850:
 - Insert:
 - i. 850.5.23 – Installation of the SP850 Polymer Concrete Sanitary Sewer Structure is to adhere to the standard precast details in SAWS Special Provision 852.

CHANGES TO PLANS

1. Remove sheet G5 and replace with G5 attached in this addendum.
2. Remove sheet C29C and replace with C29C attached in this addendum.

END OF ADDENDUM 1

This Addendum is 14 pages in its entirety, including attachments.

Attachments:

- Supplementary Instructions to Respondents (1 page)
- Price Proposal Form (8 pages)
- G5 – Overall Quantities (1 page)
- C29A – Line D 12-Inch Plan and Profile STA. 0+00 – End (1 page)



V. Ryan Sowa, P.E.
Kimley-Horn and Associates, Inc.



REQUIRED DOCUMENT MATRIX

Proposal Packet Items	Ref. Page(s)	Ref. Section	Included in Overall Page Limit 25 Pages Total (Yes/No)	Forms Provided in RFCSP
Cover Letter, Tabs, Proposal Table of Contents, etc.			NO	Cover letter (optional); all others Respondent to provide
Bid Bond/Cashier's Check	IR-2	3	NO	Respondent to provide
Statement on President's Executive Order	IR-7	21.(c)	NO	Statement on President's Executive Order Acknowledgement
Proposal Checklist	CH - 1		NO	Proposal Checklist Form
Team Qualifications and Experience				
Team Info.	SIR-3	E.1.a.i - ix	YES	Evaluation Criteria Form
Organizational Chart	SIR-5	E.1.vii	YES	1 page limit (size 8.5"x11" or 11"x17")
Key Personnel Roles	SIR-3	E.1.a.i.viii	YES	Evaluation Criteria Form
Financial Statement	SIR-3 to SIR-4	E.1.a.ix	NO	Evaluation Criteria Form
Team Resumes	SIR-5	E.1.b.i - ii	NO	1 page per person (size 8.5" x 11")
Quality, Reputation, and Ability to Deliver Projects on Schedule and within Budget				
Prime Contractor Past Projects	SIR-5 to SIR-6	E.2.a.i - ii	YES	Evaluation Criteria Form
Current and Recently	SIR-6 to SIR-7	E.2.a.iii	NO	Evaluation Criteria Form
Key Subcontractor(s) Projects	SIR-7 to SIR-8	E.2.b.i - ii	YES	Evaluation Criteria Form
Project Approach including Delivery Schedule				
Approach	SIR-8	E.3.a.i - v	YES	Evaluation Criteria Form
Schedule	SIR-8 to SIR-9	E.3.b.i - iv	YES	Evaluation Criteria Form
Team Safety Info	SIR-9	E.4.i - iii	YES	Evaluation Criteria Form
Respondent Questionnaire	RQ-1 to RQ-3	1 - 13	NO	Respondent Questionnaire Form
Price Proposal	PP		NO	Price Proposal Form
Proposal Certification	PC-1		NO	Proposal Certification Form
Good Faith Effort Plan (GFEP)	GFEP-1		NO	Good Faith Effort Plan Form
SMWVB Certifications	SIR-10 to SIR-12	E.6.a - g	NO	Optional; if including Respondent to provide
Conflict of Interest Questionnaire (CIQ)	Form CIQ		NO	Conflict of Interest Questionnaire Form
W-9	Form W-9		NO	W-9 Form
Proof of Insurability	WC1 to WC3 and ICS		NO	Respondent to provide

Notes:

1. Respondent shall check the SAWS website to verify the number of Addendums and ensure the correct version of the forms are being utilized prior to submitting their proposal.
2. For sections where no page limit applies as indicated on this matrix, an appendix may be used if desired.

PRICE PROPOSAL

PROPOSAL OF _____, a corporation
a partnership consisting of _____
an individual doing business as _____

THE SAN ANTONIO WATER SYSTEM:

Pursuant to Instructions and Invitation for Competitive Sealed Proposals, the undersigned proposes to furnish all labor and materials as specified and perform the work required for the project as specified, in accordance with the Plans and Specifications for the following prices in the bid proposal to wit:

PLEASE SEE ATTACHED LIST OF BID ITEMS.

RESPONDENT'S SIGNATURE & TITLE

FIRM'S NAME (TYPE OR PRINT)

FIRM'S ADDRESS

FIRM'S PHONE NO. /FAX NO.

FIRM'S EMAIL ADDRESS

The Contractor herein acknowledges receipt of the following:
Addendum Nos. _____

OWNER RESERVES THE RIGHT TO ACCEPT THE OVERALL MOST RESPONSIBLE PROPOSAL.

The Respondent offers to construct the Project in accordance with the Contract Documents for the contract price, and to complete the Project within **450** calendar days after the start date, as set forth in the Authorization to Proceed. **The Respondent understands and accepts the provisions of the contract Documents relating to liquidated damages of the project if not completed on time.**

Complete the additional requirements of the Proposal which are included on the following pages.

Statement on President's Executive Orders

Has your firm previously performed work subject to the President's Executive Orders Numbers 11246 and 11375 or any preceding similar executive orders (Numbers 10925 and 11114)?

Yes No

LINE NO.	ITEM NO.	ITEM DESCRIPTION	QUANTITY	UNIT	UNIT PRICE	TOTAL PRICE
1	103.3	REMOVE SIDEWALKS AND DRIVEWAYS	1,700	SF	\$	\$
2	413.1	FLOWABLE FILL (LOW STRENGTH)	3,025	CY	\$	\$
3	503.2	PORTLAND CEMENT CONCRETE DRIVEWAY - COMMERCIAL	189	SY	\$	\$
4	505	CONCRETE RIPRAP (5" THICK)	122	SY	\$	\$
5	508.1	RELOCATING WIRE FENCE	60	LF	\$	\$
6	520.1	HYDROMULCHING (RESIDENTIAL OR COMMERCIAL)	89,648	SY	\$	\$
7	530.1	BARRICADES, SIGNS AND TRAFFIC HANDLING	1	LS	\$	\$
8	540	STORM WATER POLLUTION PREVENTION PLAN	1	LS	\$	\$
9	550.1	TRENCH EXCAVATION SAFETY PROTECTION	8,415	LF	\$	\$
10	848A	6-INCH SDR-26 (ASTM D-3034) PVC SANITARY SEWER LINE (6' TO 10')	54	LF	\$	\$
11	848A	8-INCH SDR-26 (ASTM D-3034) PVC SANITARY SEWER LINE (6' TO 10')	34	LF	\$	\$
12	848A	8-INCH SDR-26 (ASTM D-3034) PVC SANITARY SEWER LINE (10' TO 14')	291	LF	\$	\$
13	848A	8-INCH SDR-26 (ASTM D-3034) PVC SANITARY SEWER LINE (14' TO 18')	27	LF	\$	\$
14	848A	8-INCH SDR-26 (ASTM D-3034) PVC SANITARY SEWER LINE (18' TO 22')	31	LF	\$	\$
15	848A	10-INCH SDR-26 (ASTM D-3034) PVC SANITARY SEWER LINE (6' TO 10')	59	LF	\$	\$
16	848A	12-INCH SDR-26 (ASTM D-3034) PVC SANITARY SEWER LINE (6' TO 10')	215	LF	\$	\$
17	848A	12-INCH SDR-26 (ASTM D-3034) PVC SANITARY SEWER LINE (10' TO 14')	12	LF	\$	\$

18	848A	12-INCH SDR-26 (ASTM D-3034) PVC SANITARY SEWER LINE (14' TO 18')	57	LF	\$	\$
19	848A	12-INCH SDR-26 (ASTM D-3034) PVC SANITARY SEWER LINE (18' TO 22')	27	LF	\$	\$
20	848A	12-INCH SDR-26 (ASTM D-3034) PVC SANITARY SEWER LINE (22' TO 25')	8	LF	\$	\$
21	848A	24-INCH SDR-26 (ASTM F-679) PVC SANITARY SEWER LINE (6' TO 10')	91	LF	\$	\$
22	848A	24-INCH SDR-26 (ASTM F-679) PVC SANITARY SEWER LINE (10' TO 14')	520	LF	\$	\$
23	848A	24-INCH SDR-26 (ASTM F-679) PVC SANITARY SEWER LINE (14' TO 18')	1,903	LF	\$	\$
24	848A	24-INCH SDR-26 (ASTM F-679) PVC SANITARY SEWER LINE (18' TO 22')	48	LF	\$	\$
25	848B	SANITARY SEWERS - PIPE TESTING AND ACCEPTANCE	3,377	LF	\$	\$
26	852A 853A	SANITARY SEWER MANHOLE FIBER-REINFORCED SANITARY SEWER MANHOLE - 4' DIAMETER FIBERGLASS MANHOLE	11	EA	\$	\$
27	852A 853A	SANITARY SEWER DROP MANHOLE FIBER-REINFORCED SANITARY SEWER MANHOLE - 4' DIAMETER FIBERGLASS MANHOLE W/ DROP	13	EA	\$	\$
28	852A 853A	EXTRA DEPTH MANHOLE (>6') FIBER-REINFORCED SANITARY SEWER MANHOLE - 4' DIAMETER FIBERGLASS MANHOLE, EXTRA DEPTH (>6')	45	VF	\$	\$
29	852A 853A	EXTRA DEPTH DROP MANHOLE (>6') FIBER-REINFORCED SANITARY SEWER MANHOLE - 4' DIAMETER FIBERGLASS MANHOLE W/ DROP, EXTRA DEPTH (>6')	119	VF	\$	\$

30	852B 853B	SANITARY SEWER MANHOLES - MANHOLE TESTING AND ACCEPTANCE FIBER-REINFORCED SANITARY SEWER MANHOLE - 4' DIAMETER FIBERGLASS MAHOLE TESTING AND ACCEPTANCE	24	EA	\$	\$
31	853A SP850	FIBER-REINFORCE SANITARY SEWER MANHOLE – 6' DIAMETER FIBERGLASS MANHOLE OR POLYMER CONCRETE SANITARY SEWER STRUCTURE - 6' DIAMETER	5	EA	\$	\$
32	853A	FIBER-REINFORCED SANITARY SEWER MANHOLE - 6' DIAMETER FIBERGLASS MANHOLE, EXTRA DEPTH (>6')	89	VF	\$	\$
33	853A SP850	FIBER-REINFORCED SANITARY SEWER MANHOLE - TEE BASE FIBERGLASS MANHOLE, MITER OR POLYMER CONCRETE SANITARY SEWER STRUCTURE - 6' DIAMETER	7	EA	\$	\$
34	853A	FIBER-REINFORCED SANITARY SEWER MANHOLE - TEE BASE FIBERGLASS MANHOLE, MITER, EXTRA DEPTH (>6')	107	VF	\$	\$
35	853A SP850	FIBER-REINFORCED SANITARY SEWER MANHOLE - TEE BASE FIBERGLASS MANHOLE, MITER W/ DROP OR POLYMER CONCRETE SANITARY SEWER STRUCTURE - 6' DIAMETER	9	EA	\$	\$
36	853A	FIBER-REINFORCED SANITARY SEWER MANHOLE - TEE BASE FIBERGLASS MANHOLE, MITER W/ DROP, EXTRA DEPTH (>6')	138	VF	\$	\$

37	853B	FIBER-REINFORCED SANITARY SEWER MANHOLES - MANHOLE TESTING AND ACCEPTANCE	21	EA	\$	\$
38	857A	36-INCH FRP (ASTM D- 3262) (PS 72) SANITARY SEWER LINE (14' TO 18')	1,640	LF	\$	\$
39	857A	36-INCH FRP (ASTM D- 3262) (PS 72) SANITARY SEWER LINE (18' TO 22')	1,168	LF	\$	\$
40	857A	36-INCH FRP (ASTM D- 3262) (PS 72) SANITARY SEWER LINE (22' TO 25')	50	LF	\$	\$
41	857A	42-INCH FRP (ASTM D- 3262) (PS 72) SANITARY SEWER LINE (18' TO 22')	1,101	LF	\$	\$
42	857A	42-INCH FRP (ASTM D- 3262) (PS 72) SANITARY SEWER LINE (22' TO 25')	826	LF	\$	\$
43	857A	42-INCH FRP (ASTM D- 3262) (PS 72) SANITARY SEWER LINE (25' TO 30')	235	LF	\$	\$
44	857B	FIBERGLASS REINFORCED PIPE FOR LARGE DIAMETER GRAVITY SEWER: PIPE TESTING AND ACCEPTANCE	5,020	LF	\$	\$
45	02314 02341 02345	JACKING, BORING OR TUNNELING (24")	306	LF	\$	\$
46	02314 02341 02345	JACKING, BORING OR TUNNELING (54")	545	LF	\$	\$
47	02314 02341 02345	JACKING, BORING OR TUNNELING (60")	2,755	LF	\$	\$
48	02349	CARRIER PIPE FOR JACKING, BORING OR TUNNELING (8" PVC SDR26 PVC GRAVITY SEWER CARRIER PIPE IN TUNNEL)	159	LF	\$	\$
49	02349	CARRIER PIPE FOR JACKING, BORING OR TUNNELING (12" PVC SDR26 PVC GRAVITY SEWER CARRIER PIPE) (OPEN CUT)	165	LF	\$	\$

50	02349	CARRIER PIPE FOR JACKING, BORING OR TUNNELING (36" PS 72 FRP GRAVITY SEWER CARRIER PIPE IN TUNNEL)	545	LF	\$	\$
51	02349	CARRIER PIPE FOR JACKING, BORING OR TUNNELING (42" FRP GRAVITY SEWER CARRIER PIPE IN TUNNEL)	2,755	LF	\$	\$
52	02610	STEEL CASING (.375" THICK) 24" (6", 8", 10", 12" PVC)	306	LF	\$	\$
53	02610	STEEL CASING (.375" THICK) 24" (6", 8", 10", 12" PVC) (OPEN CUT)	18	LF	\$	\$
54	02610	STEEL CASING (0.5" THICK) 54" OR LINER PLATE 56" (36"FRP)	545	LF	\$	\$
55	02610	STEEL CASING (0.5" THICK) 60" OR LINER PLATE 62" (42"FRP)	2,755	LF	\$	\$
56	858	CONCRETE ENCASEMENT, CRADLES, SADDLES, AND COLLARS	23	CY	\$	\$
57	862.2	ABANDONMENT OF SANITARY SEWER MAIN (6-INCH SANITARY SEWER LINE)	60	LF	\$	\$
58	862.2	ABANDONMENT OF SANITARY SEWER MAIN (8-INCH SANITARY SEWER LINE)	310	LF	\$	\$
59	862.2	ABANDONMENT OF SANITARY SEWER MAIN (10-INCH SANITARY SEWER LINE)	136	LF	\$	\$
60	862.2	ABANDONMENT OF SANITARY SEWER MAIN (21-INCH SANITARY SEWER LINE)	2,663	LF	\$	\$
61	862.2	ABANDONMENT OF SANITARY SEWER MAIN (24-INCH SANITARY SEWER LINE)	7,357	LF	\$	\$
62	864-S1	BYPASS PUMPING (SMALL DIAMETER SANITARY SEWERS)	1	LS	\$	\$
63	864-S2	BYPASS PUMPING (LARGE DIAMETER SANITARY SEWERS)	1	LS	\$	\$

64	866A	EXISTING SEWER MAIN PRE TELEVISION INSPECTION	15,135	LF	\$	\$
65	866	SEWER MAIN POST TELEVISION INSPECTION (8" THROUGH 15")	1,028	LF	\$	\$
66	866	SEWER MAIN POST TELEVISION INSPECTION (18" THROUGH 24")	2,561	LF	\$	\$
67	866	SEWER MAIN POST TELEVISION INSPECTION (30" OR GREATER)	8,320	LF	\$	\$
68	SP820 A	CSC PIPE JOINT INSPECTION	4	EA	\$	\$
69	SP820 B	CSC PIPE JOINT WELD	4	EA	\$	\$

SUBTOTAL (LINES 1 - 69)						\$
-------------------------	--	--	--	--	--	----

LINE NO.	ITEM NO.	ITEM DESCRIPTION	QUANTITY	UNIT	UNIT PRICE	TOTAL PRICE
70	100.1	MOBILIZATION (MAX 10% OF ITEMS 1 TO 69)	1	LS	\$	\$
71	100	INTERMEDIATE DEMOBILIZATION BYPASS EQUIPMENT RENTAL	20	MD	\$	\$
72	100	INTERMEDIATE DEMOBILIZATION BYPASS PUMPING FUEL	20	MD	\$	\$
73	100	INTERMEDIATE DEMOBILIZATION BYPASS WATCH	20	MD	\$	\$
74	SP100 A	INTERMEDIATE DEMOBILIZATION/REMOBILIZATION (OPEN CUT)	2	EA	\$	\$
75	SP100 B	INTERMEDIATE DEMOBILIZATION/REMOBILIZATION (TRENCHLESS)	2	EA	\$	\$
76	101.1	PREPARATION OF RIGHT-OF-WAY (MAX 5% OF ITEMS 1 TO 69)	1	LS	\$	\$

***Note: "MD" stands for "Man Days"**

SUBTOTAL (LINES 70 - 76)	\$
--------------------------	----

Mobilization and Prep of ROW shall be limited to the maximum percentage shown. **If the percentage exceeds the allowable maximum stated for mobilization and or preparation of ROW, SAWS reserves the right to cap the amount at the percentages shown and adjust the extensions of the bid items accordingly.**

TOTAL BID PRICE (TO INCLUDE LINE ITEMS 1 - 69 AND 70-76)	\$
---	----

General Sanitary Sewer Quantities

TOTAL ESTIMATED QUANTITIES			
ITEM NO.	DESCRIPTION	UNIT	QUANTITY
103.3	REMOVE SIDEWALKS AND DRIVEWAYS	SF	1,700
413.1	FLOWABLE FILL (LOW STRENGTH)	CY	3,025
503.2	PORTLAND CEMENT CONCRETE DRIVEWAY - COMMERCIAL	SY	189
505	CONCRETE RIPRAP (5" THICK)	SY	122
508.1	RELOCATING WIRE FENCE	LF	60
520.1	HYDROMULCHING (RESIDENTIAL OR COMMERCIAL)	SY	89,648
530.1	BARRICADES, SIGNS AND TRAFFIC HANDLING	LS	1
540	STORM WATER POLLUTION PREVENTION PLAN	LS	1
550.1	TRENCH EXCAVATION SAFETY PROTECTION	LF	8,415
848A	6-INCH SDR-26 (ASTM D-3034) PVC SANITARY SEWER LINE (6' TO 10')	LF	54
848A	8-INCH SDR-26 (ASTM D-3034) PVC SANITARY SEWER LINE (6' TO 10')	LF	34
848A	8-INCH SDR-26 (ASTM D-3034) PVC SANITARY SEWER LINE (10' TO 14')	LF	291
848A	8-INCH SDR-26 (ASTM D-3034) PVC SANITARY SEWER LINE (14' TO 18')	LF	27
848A	8-INCH SDR-26 (ASTM D-3034) PVC SANITARY SEWER LINE (18' TO 22')	LF	31
848A	10-INCH SDR-26 (ASTM D-3034) PVC SANITARY SEWER LINE (6' TO 10')	LF	59
848A	12-INCH SDR-26 (ASTM D-3034) PVC SANITARY SEWER LINE (6' TO 10')	LF	215
848A	12-INCH SDR-26 (ASTM D-3034) PVC SANITARY SEWER LINE (10' TO 14')	LF	12
848A	12-INCH SDR-26 (ASTM D-3034) PVC SANITARY SEWER LINE (14' TO 18')	LF	57
848A	12-INCH SDR-26 (ASTM D-3034) PVC SANITARY SEWER LINE (18' TO 22')	LF	27
848A	12-INCH SDR-26 (ASTM D-3034) PVC SANITARY SEWER LINE (22' TO 25')	LF	8
848A	24-INCH SDR-26 (ASTM F-679) PVC SANITARY SEWER LINE (6' TO 10')	LF	91
848A	24-INCH SDR-26 (ASTM F-679) PVC SANITARY SEWER LINE (10' TO 14')	LF	520
848A	24-INCH SDR-26 (ASTM F-679) PVC SANITARY SEWER LINE (14' TO 18')	LF	1,903
848A	24-INCH SDR-26 (ASTM F-679) PVC SANITARY SEWER LINE (18' TO 22')	LF	48
848B	SANITARY SEWERS - PIPE TESTING AND ACCEPTANCE	LF	3,377
852A	SANITARY SEWER MANHOLE	EA	11
852A	FIBER-REINFORCED SANITARY SEWER MANHOLE - 4' DIAMETER FIBERGLASS MANHOLE	EA	11
852A	SANITARY SEWER DROP MANHOLE	EA	13
853A	FIBER-REINFORCED SANITARY SEWER MANHOLE - 4' DIAMETER FIBERGLASS MANHOLE W/ DROP	EA	13
852A	EXTRA DEPTH MANHOLE (>6')	VF	45
853A	FIBER-REINFORCED SANITARY SEWER MANHOLE - 4' DIAMETER FIBERGLASS MANHOLE, EXTRA DEPTH (>6')	VF	45
852A	EXTRA DEPTH DROP MANHOLE (>6')	VF	119
853A	FIBER-REINFORCED SANITARY SEWER MANHOLE - 4' DIAMETER FIBERGLASS MANHOLE W/ DROP, EXTRA DEPTH (>6')	VF	119
852B	SANITARY SEWER MANHOLES - MANHOLE TESTING AND ACCEPTANCE	EA	24
853B	FIBER-REINFORCED SANITARY SEWER MANHOLE - 4' DIAMETER FIBERGLASS MAHOLE TESTING AND ACCEPTANCE	EA	24
853A	FIBER-REINFORCE SANITARY SEWER MANHOLE - 6' DIAMETER FIBERGLASS MANHOLE OR	EA	5
SP850	POLYMER CONCRETE SANITARY SEWER STRUCTURE - 6' DIAMETER	EA	5
853A	FIBER-REINFORCED SANITARY SEWER MANHOLE - 6' DIAMETER FIBERGLASS MANHOLE, EXTRA DEPTH (>6')	VF	89
853A	FIBER-REINFORCED SANITARY SEWER MANHOLE - TEE BASE FIBERGLASS MANHOLE, MITER OR	EA	7
SP850	POLYMER CONCRETE SANITARY SEWER STRUCTURE - 6' DIAMETER	EA	7
853A	FIBER-REINFORCED SANITARY SEWER MANHOLE - TEE BASE FIBERGLASS MANHOLE, MITER, EXTRA DEPTH (>6')	VF	107
853A	FIBER-REINFORCED SANITARY SEWER MANHOLE - TEE BASE FIBERGLASS MANHOLE, MITER W/ DROP OR	EA	9
SP850	POLYMER CONCRETE SANITARY SEWER STRUCTURE - 6' DIAMETER	EA	9
853A	FIBER-REINFORCED SANITARY SEWER MANHOLE - TEE BASE FIBERGLASS MANHOLE, MITER W/ DROP, EXTRA DEPTH (>6')	VF	158
853B	FIBER-REINFORCED SANITARY SEWER MANHOLES - MANHOLE TESTING AND ACCEPTANCE	EA	21
857A	36-INCH FRP (ASTM D-3262) (PS 72) SANITARY SEWER LINE (14' TO 18')	LF	1,640
857A	36-INCH FRP (ASTM D-3262) (PS 72) SANITARY SEWER LINE (18' TO 22')	LF	1,168
857A	36-INCH FRP (ASTM D-3262) (PS 72) SANITARY SEWER LINE (22' TO 25')	LF	50
857A	42-INCH FRP (ASTM D-3262) (PS 72) SANITARY SEWER LINE (18' TO 22')	LF	1,101
857A	42-INCH FRP (ASTM D-3262) (PS 72) SANITARY SEWER LINE (22' TO 25')	LF	826
857A	42-INCH FRP (ASTM D-3262) (PS 72) SANITARY SEWER LINE (25' TO 30')	LF	235
857B	FIBERGLASS REINFORCED PIPE FOR LARGE DIAMETER GRAVITY SEWER: PIPE TESTING AND ACCEPTANCE	LF	5,020

TOTAL ESTIMATED QUANTITIES			
ITEM NO.	DESCRIPTION	UNIT	QUANTITY
02314	JACKING, BORING OR TUNNELING (24')	LF	306
02341	JACKING, BORING OR TUNNELING (54')	LF	545
02345	JACKING, BORING OR TUNNELING (60')	LF	2755
02349	CARRIER PIPE FOR JACKING, BORING OR TUNNELING (8" PVC SDR26 PVC GRAVITY SEWER CARRIER PIPE IN TUNNEL)	LF	159
02349	CARRIER PIPE FOR JACKING, BORING OR TUNNELING (12" PVC SDR26 PVC GRAVITY SEWER CARRIER PIPE) (OPEN CUT)	LF	165
02349	CARRIER PIPE FOR JACKING, BORING OR TUNNELING (36" PS 72 FRP GRAVITY SEWER CARRIER PIPE IN TUNNEL)	LF	545
02349	CARRIER PIPE FOR JACKING, BORING OR TUNNELING (42" FRP GRAVITY SEWER CARRIER PIPE IN TUNNEL)	LF	2755
02610	STEEL CASING (.375" THICK) 24" (6", 8", 10", 12" PVC)	LF	306
02610	STEEL CASING (.375" THICK) 24" (6", 8", 10", 12" PVC) (OPEN CUT)	LF	18
02610	STEEL CASING (0.5" THICK) 54" OR LINER PLATE 56" (36" FRP)	LF	545
02610	STEEL CASING (0.5" THICK) 60" OR LINER PLATE 62" (42" FRP)	LF	2755
858	CONCRETE ENCASUREMENT, CRADLES, SADDLES, AND COLLARS	CY	23
862.2	ABANDONMENT OF SANITARY SEWER MAIN (6-INCH SANITARY SEWER LINE)	LF	60
862.2	ABANDONMENT OF SANITARY SEWER MAIN (8-INCH SANITARY SEWER LINE)	LF	310
862.2	ABANDONMENT OF SANITARY SEWER MAIN (10-INCH SANITARY SEWER LINE)	LF	136
862.2	ABANDONMENT OF SANITARY SEWER MAIN (21-INCH SANITARY SEWER LINE)	LF	2663
862.2	ABANDONMENT OF SANITARY SEWER MAIN (24-INCH SANITARY SEWER LINE)	LF	7357
864-S1	BYPASS PUMPING (SMALL DIAMETER SANITARY SEWERS)	LS	1
864-S2	BYPASS PUMPING (LARGE DIAMETER SANITARY SEWERS)	LS	1
866A	EXISTING SEWER MAIN PRE TELEVISION INSPECTION	LF	15135
866	SEWER MAIN POST TELEVISION INSPECTION (6" THROUGH 15')	LF	1028
866	SEWER MAIN POST TELEVISION INSPECTION (18" THROUGH 24')	LF	2561
866	SEWER MAIN POST TELEVISION INSPECTION (30" OR GREATER)	LF	8320
SP820A	CSC PIPE JOINT INSPECTION	EA	4
SP820B	CSC PIPE JOINT WELD	EA	4
100.1	MOBILIZATION (MAX 10% OF ITEMS 1 TO 69)	LS	1
100	INTERMEDIATE DEMOBILIZATION BYPASS EQUIPMENT RENTAL	MD	20
100	INTERMEDIATE DEMOBILIZATION BYPASS PUMPING FUEL	MD	20
100	INTERMEDIATE DEMOBILIZATION BYPASS WATCH	MD	20
SP100A	INTERMEDIATE DEMOBILIZATION/REMOBILIZATION (OPEN CUT)	EA	2
SP100B	INTERMEDIATE DEMOBILIZATION/REMOBILIZATION (TRENCHLESS)	EA	2
101.1	PREPARATION OF RIGHT-OF-WAY (MAX 5% OF ITEMS 1 TO 69)	LS	1

Kimley»Horn

Texas Registered Firm, No. 928
 601 NW Loop 410 Suite 350 San Antonio, TX 78216
 Tel No. 210-541-9166 Fax No. 210-541-8699

No.	Revision	By	Date
▲	ADDENDUM #1	VRS	03/12/2021

SAN ANTONIO WATER SYSTEM

W2 HUEBNER CREEK: ECKHERT TO BANDERA

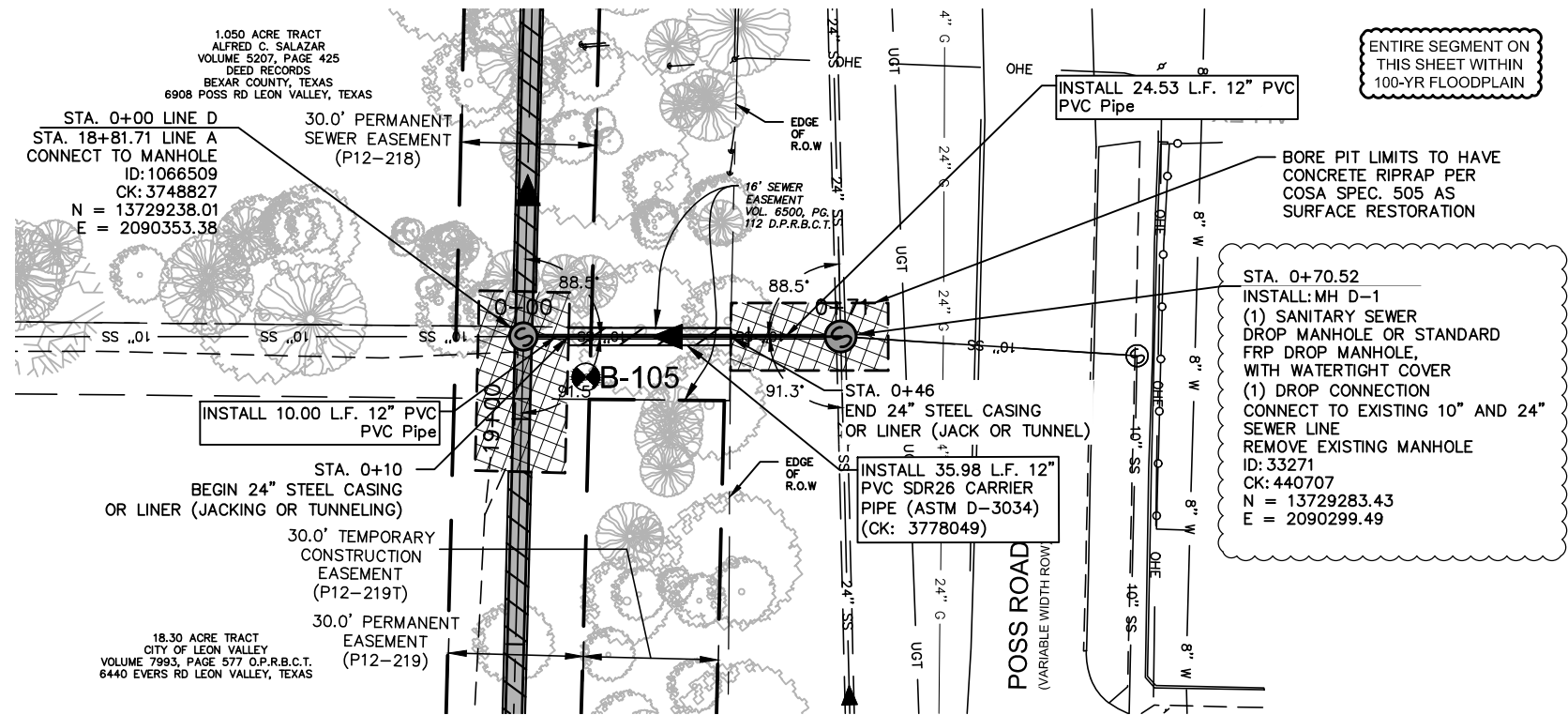
SHEET

OVERALL QUANTITIES

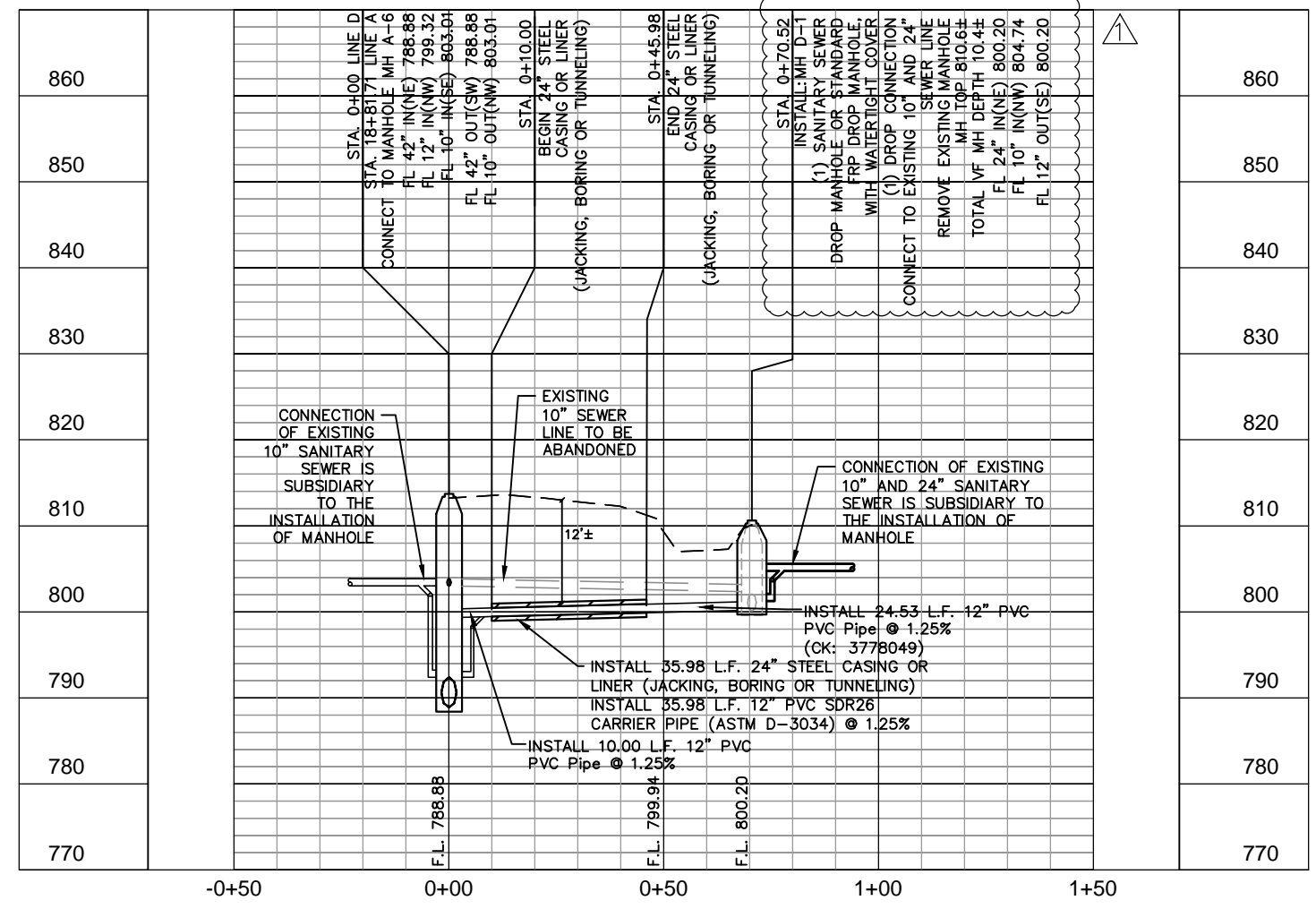
DATE: MARCH 2021	SAWS PROJECT NO.	SHEET NO. G5
DESIGN: VRS	15-4513	
DRAWN: RKC	KHA PROJECT NO.	
CHECKED: JAF	068665009	



GRAPHIC SCALE 20'
FULL SIZE 1" = 20'
HALF SIZE 1" = 40'



ESTIMATED QUANTITIES			
ITEM NO.	DESCRIPTION	UNIT	QUANTITY
413.1	FLOWABLE FILL (LOW STRENGTH)	CY	8
505	CONCRETE RIPRAP (5" THICK)	SY	100
550.1	TRENCH EXCAVATION SAFETY PROTECTION	LF	35
848A	12-INCH SDR-26 (ASTM D-3034) PVC SANITARY SEWER LINE (6' TO 10')	LF	18
848A	12-INCH SDR-26 (ASTM D-3034) PVC SANITARY SEWER LINE (10' TO 14')	LF	12
848A	12-INCH SDR-26 (ASTM D-3034) PVC SANITARY SEWER LINE (14' TO 18')	LF	5
852A	SANITARY SEWER DROP MANHOLE	EA	1
853A	FIBER-REINFORCED SANITARY SEWER MANHOLE - 4' DIAMETER FIBERGLASS MANHOLE W/ DROP	EA	1
852A	EXTRA DEPTH DROP MANHOLE (>6')	VF	5
853A	FIBER-REINFORCED SANITARY SEWER MANHOLE - 4' DIAMETER FIBERGLASS MANHOLE W/ DROP, EXTRA DEPTH (>6')	VF	5
02341	JACKING, BORING OR TUNNELING (24")	LF	36
02345	JACKING, BORING OR TUNNELING (24")	LF	36
02349	CARRIER PIPE FOR JACKING, BORING OR TUNNELING (12" PVC SDR26 PVC GRAVITY SEWER CARRIER PIPE) (OPEN CUT)	LF	36
02610	STEEL CASING (.375" THICK) 24" (6", 8", 10", 12" PVC)	LF	36
866	SEWER MAIN POST TELEVISION INSPECTION (6" THROUGH 15")	LF	71



LEGEND		FULL SIZE (22" x 34") 1" = 10' VERTICAL	HALF SIZE (11" x 17") 1" = 20' VERTICAL
PROPERTY LINE	---	---	---
EXISTING SAN. SWR.	8" SS	PROP. SAN. SWR. LINE	8" SS
EXISTING RECYCLE MAIN	36" RE	EXISTING EASEMENT	---
EXISTING OVERHEAD ELEC. LINE & PP	OHE	PROPOSED EASEMENT	---
EXISTING UNDERGROUND ELEC. LINE	UGE	EFFECTIVE FLOOD PLAIN	---
EXISTING TELEPHONE/ FIBER LINE	UGT	PROPOSED BORE PIT	---
EXISTING UNDERGROUND CABLE	UGC	---	---
EXISTING STORM DRAIN	18" SD	---	---
EXISTING WATER LINE	12" W	---	---
EXISTING GAS LINE	2" G	---	---

Kimley»Horn
Texas Registered Firm, No. 928
601 NW Loop 410 Suite 350 San Antonio, TX 78216
Tel No. 210-541-9166 Fax No. 210-541-8699

03/18/2021

No.	Revision	By	Date
ADDENDUM #1		VRS	03/12/2021

SAN ANTONIO WATER SYSTEM

W2 HUEBNER CREEK: ECKHERT TO BANDERA

SHEET
LINE D 12-INCH PLAN AND PROFILE STA. 0+00 - END

DATE: MARCH 2021	SAWS PROJECT NO. 15-4513	SHEET NO. C29A
DESIGN: VRS	KHA PROJECT NO. 068665009	
DRAWN: RKC		
CHECKED: JAF		

K:\SNA_Utility\068665009\068665009.dwg SHEETS\PA&P_Lateral.dwg